



Note

Before starting work, ensure that the system is completely de-energised. All work on the electrical system must only be carried out when the system is de-energised.

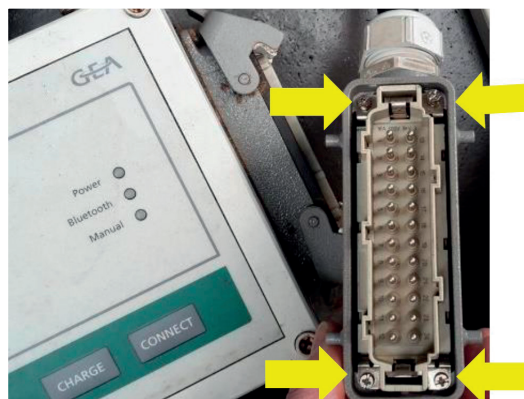
1. Switch off the control unit

Switch the robot off completely and secure it to prevent it from being switched on again accidentally

1. Switch off the control unit.
2. Unplug the power supply connector (the left-hand connector on the control unit)
3. Check whether the control unit still switches on

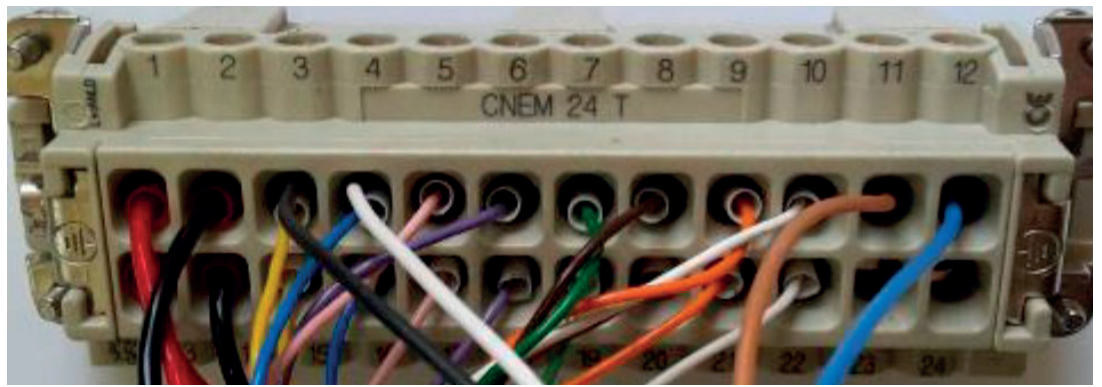
2. Replace the multi-pin connector

Disconnect the motor plug from the control unit and loosen the 4 screws. Then pull the pin insert out of the socket housing slightly. Feed the supplied connection cable through the cable gland and connect the wires as described on the next page:



Installation of datalogger manure removal robot SRone/SRone+

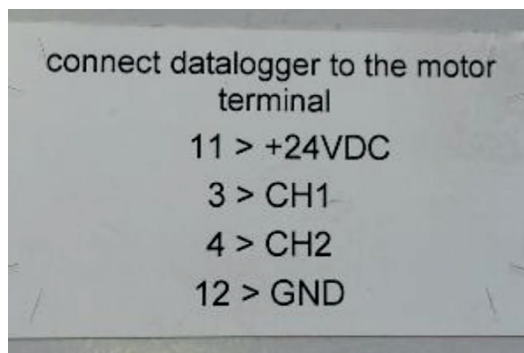
Installation of datalogger manure removal robot SRone/SRone+



SRone+
blue : Pin 6
brown: Pin 8
black: Pin 3
white: Pin 4

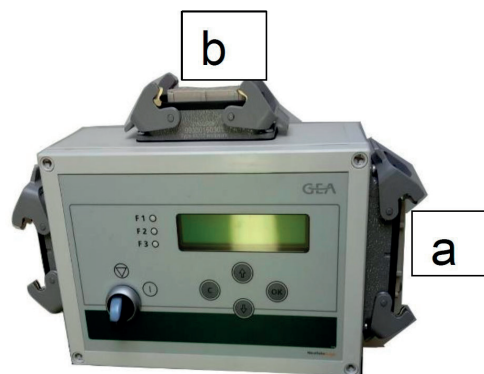
SRone
blue: Pin 12
brown: Pin 11
black: Pin 3
white: Pin 4

Please ensure that the wires already connected remain connected to their respective pins! (see example image: SRone)

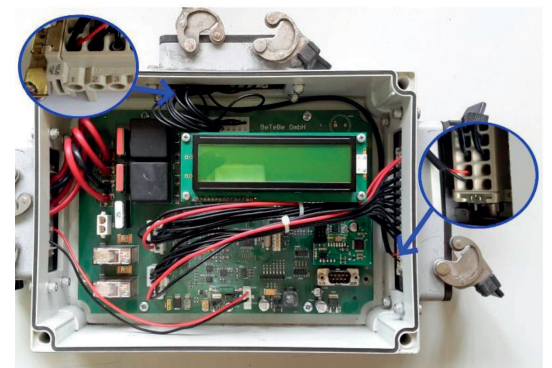


The following modification is intended exclusively for the SRone controller

You can identify SRone controllers that are already set up for the data logger by the sticker showing the pin assignment on the underside of the controller!



If the data logger is connected to an SRone controller, the controller must be internally upgraded, otherwise the data logger will not be supplied with power! Remove the controller from the robot, disconnect the 24-pin socket insert (a) on the right-hand side, and carefully open the cover.



Connect the supplied 2-core cable to pin 11 (red) and pin 12 (black). Screw the socket insert back into the control unit.

Then unscrew the 16-pin socket insert (sensor connection) (b) and connect the other end of the cable to pin 1 (red) and pin 2 (black).

The conversion is now complete.

**Video tutorial
Setup:**

